

Cycling Europe

AMSTERDAM TULIP TIME

BIKE 'n BARGE 2020

5 DAYS /4 NIGHTS

This five-day Holland bike and boat tour in peak Tulip season goes through some of the most beautiful areas of the "Garden of Amsterdam." The tulips blossoming herald the awakening of Spring and this journey offers an excellent opportunity to visit the most beautiful highlights in and around the capital of the Netherlands. There are many museums and shops to entice you in Amsterdam, the smallest metropolis of Europe, and the canals, which quite recently have been listed on the UNESCO World Heritage list, are famous all over the world. Highlights include the historical city of Haarlem, the world famous flower exhibition, the Keukenhof near Lisse, and the world's largest flower auction near Aalsmeer.

Enjoy the personal service, delicious meals and excellent accommodation on board of the premium barges „MAGNIFIQUE“, “MAGNIFIQUE II” “MAGNIFIQUE III” and FLUVIUS



Terrain: Flat with cycling between 10 – 40 kms per day

ITINERARY AMSTERDAM TO AMSTERDAM

Day 1: Boarding in Amsterdam. Amsterdam - Zaandam

Boarding 2.00 pm in Amsterdam. You are able to leave your luggage on board from 12.00noon. A short cruise will take you to Zaandam. There will be time for a brief test ride

through the surrounding area. In the evening enjoy a short walk through the picturesque center of Zaandam.



Day 2: Zaandam - Zaanse Schans - Zaandam - Haarlem – 24 or 34 kms

The first half of today's bicycle ride brings you to the open air museum, Zaanse Schans (entry included on Magnifiques). Here you will find beautiful windmills, an authentic traditional Dutch village, a cheese factory and a clog maker. In the afternoon, you can choose between a boat trip of approximately 2.5 hours or a bicycle trip to Haarlem. In Haarlem visit the historical inner city with Grote Markt and St Bavo Church.

Day 3: Haarlem - Keukenhof - Oude Wetering- 39 or 55 kms

Your ride to Keukenhof will begin after breakfast. Keukenhof is arguably the most famous flower park in the world, where you can admire hundreds of thousands of tulips, daffodils,

hyacinths and many other flowers in full bloom. After your visit, you will continue by bike to Oude Wetering where the ship will be waiting for you. Entrance fee for the Keukenhof is approximately €25 per person (entry included on Magnifiques)

Day 4: Oude Wetering - Amsterdam + Waterland circuit ride 28 kms

Early this morning you will visit by bus (6.30am) the biggest flower auction in the world at Aalsmeer (not open in the weekends and holidays). Early each morning, millions of flowers are auctioned off here and instantly sent out to all corners of the world. By 9.00am you will return to the boat for breakfast before cycling to Amsterdam. During the afternoon you will join the barge sailing through Amsterdam. Later in the afternoon you will have time to discover more of this amazing city. Visit the inner city flower markets, go to one or two of the amazing galleries or museums, do some shopping...there is just so much to do!

Entry flower auction: approx. €10.

**The Aalsmeer flower auction is not open on weekends or on public holidays. This is an optional visit. Please be aware that on certain departure dates 2020 with Fluvius (10 April), the Magnifique II (March 26) and the Magnifique III (March 25, April 2 and 15), a visit to the flower auction is not possible.*

Day 5: Amsterdam

After breakfast, you will have to say goodbye to your wonderful crew. Please leave your cabin by 9:30 am.

**All distances are approximate. The above-planned itinerary is subject to change due to changing wind and weather conditions and other unforeseen circumstances having to do with mooring requirements, etc...*

2020 TOUR DEPARTURE DATES

Fluvius:	06 April, 10 April, 14 April
Magnifique II:	26 March
Magnifique III:	25 March, 29 March, 02 April, 07 April, 11 April, 15 April, 19 April

YOUR BARGE: MS FLUVIUS (Comfort)



The MS Fluvius offers space for a maximum of 44 guests and is 70m long. It sails under the Dutch flag and management and has sailed in Holland and Belgium for many years.

There is a total of 22 cabins on board, with 15 two-bedded lower deck cabins (windows cannot be opened), 3 two-bedded upper deck cabins with picture window (cannot be opened) and 4 new upper deck double/twin cabins with French balcony with opening sliding door. All cabins have an ensuite bathroom, TV and air conditioning that can be individually adjusted.

On the upper deck there is a tastefully furnished salon with restaurant, bar, and lounge. Partially covered sun decks have deck chairs, tables and recliners. The inside of ship is a no-smoking zone. Smoking is only allowed on the sun deck.



PREMIUM BARGE: MS MAGNIFIQUE

MS Magnifique has cabins for 32 - 35 guests and is 63 metres long. Owned and operated by a Dutch company, it was completely modernised in 2010.

There are a total of:-

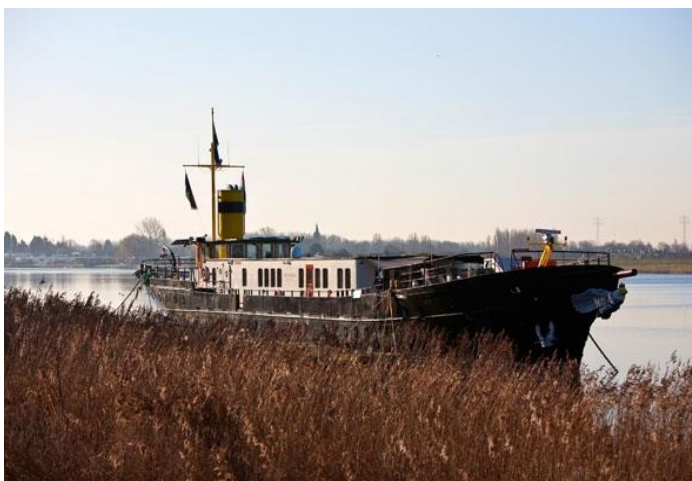
17 Cabins with twin beds as follows:-

4 Premium Twin cabins (junior suites) approx. 14 m² with 2 single beds next to each other and a small sitting area.

11 Twin cabins approx. 11 m² with 2 single beds.

2 single cabins approx 8 m²

All cabins have fixed portholes, own shower & toilet, air conditioning, and flat screen TV. **Triple cabins:** If requested a 3rd bed is available in some cabins (above the other beds).



On the upper deck there is a tastefully furnished salon with a restaurant, bar, lounge with wide screen TV and large windows. Two partially covered teak sun decks have deck chairs, tables and recliners. There is also a whirlpool/jacuzzi and barbecue on the afterdeck.



Fully licensed bar and dining area:



PREMIUM BARGE: MS MAGNIFIQUE II

MS Magnifique II was completed in February 2016. The lower deck has 14 cabins: - 12 twin cabins (approx. 11 sq metres with 2 single beds next to each other), 1 premium twin (approx. 13 sq metres with two single beds next to each other with a small sitting area) and 1 single cabin (approx. 8 sq metres).

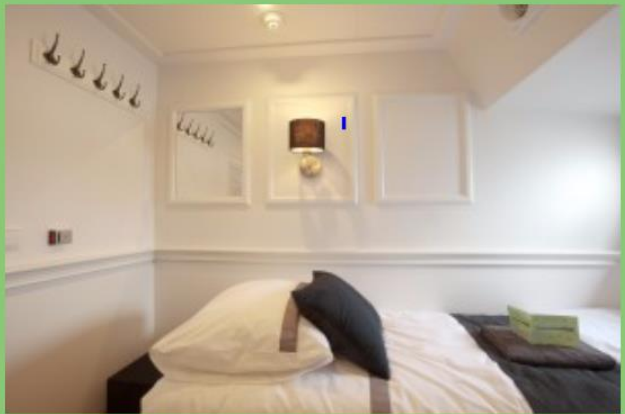
The upper deck has 4 beautiful suites (approx. 14 sq metres, 2 single beds next to each other and a small sitting area).

Cabins on the lower deck have fixed portholes, upper deck suites have 2 metre wide windows with one that can be opened.

All cabins have an ensuite (shower and toilet), individually regulated air conditions, flat screen satellite TV.

On the upper deck is a tastefully furnished salon with restaurant, bar and lounge with wide screen TV, large windows and Wifi (limited use of data).

A partly covered teak wooden sun deck with chairs and tables is on the aft deck and a cycle shed on the front deck.



TWIN SUITE: MAGNIFIQUE II

TWIN CABIN: MAGNIFIQUE II



PREMIUM BARGE: MS MAGNIFIQUE III

We are always excited to add new boats to our program and are especially excited about this one. MAGNIFIQUE III was launched in 2018. Following the success of her sister ships, Magnifique I and Magnifique II, this deluxe vessel will not disappoint.

All cabins and suites have en-suite bathrooms with shower and toilet, individually regulated air conditioning, flat screen (satellite) TV, a small safe and a hair dryer. On request, an extra bed is available in some twin cabins (above one of the other beds). Most cabins can also be booked as cabins with a double bed (on previous request only). WiFi is available throughout the ship. (Due to steel construction of the ships, WiFi strength may not be what you are accustomed to.)

Number of guests: 40

Length/width/draught: 70 m / 7.2 m / 1.6 m

Lower deck

- 14 regular twin cabins (approx. 11 M², 2 single beds as twins, next to each other)
- 2 single cabins

Upper deck

- 5 upper deck suites with a small sitting area and large windows (part of the windows can be opened). (approx. 14 M², 2 single beds as twins, next to each other)
- Spacious salon with large windows combines a restaurant area, bar, and lounge
- 2 screens (a camera and a navigation system) to see the real time position of the barge
- Large doors open to the partially roofed sundeck

Top deck

- Whirlpool/Jacuzzi and deck chairs to relax



2019 COSTS PER PERSON IN EUROS

Fluvius: Minimum number for this tour is 16

Twin cabin upper deck	€ 809
Twin cabin lower deck	€ 689
Double cabin upper deck (new)	€ 959
Twin cabin for SINGLE use, lower deck	€ 999

MS Magnifique: March departures April departures

Twin Cabin	€ 789	€ 839
Premium Twin	€ 919	€ 969
Single Cabin	€ 1154	€ 1229
*Regular triple cabin	€ 749	€ 799
*Premium triple cabin	€ 869	€ 919

*Triple cabins are on request and limited to 2 premium triple cabins and 2 regular triple cabins.

MS Magnifique II: March departures April departures

Twin Cabin	€ 789	€ 839
Premium Twin Cabin	€ 919	€ 969
Upper deck Suite	€1089	€ 1139
Single Cabin	€1154	€ 1229
*Triple cabin	€ 749	€ 799
*Triple cabin upper deck suite	€ 1019	€1069

MS Magnifique III: March departures April departures

Twin Cabin	€ 789	€839
Upper deck Suite	€ 1089	€1139
Single Cabin	€ 1009	€1073
*Triple cabin	€ 749	€ 799

BIKES

Bike 7 Speed	€ 55
E Bike	€105 (limited availability)
Helmets	€ 10 (Fluvius)
Limitation of liability Standard bike	€10
Limitation of liability E Bike	€25

WHATS INCLUDED

- Accommodations for 5 day/4 nights on board
- All meals (Vegetarian meals are possible with no charge however gluten free or lactose intolerant are possible at a fee of approx. € 35)
- Welcome drink
- Helmets (on the Fluvius, limited number €10, please request at time of booking)
- Tour leaders with daily briefings of the bike tours, some short city tours, fully guided bike tours
- Maps and notes for cycling tours (1 set per cabin)
- Daily coffee and tea until 4 pm

- Fees for ferries
- Climate controlled cabin, with daily cleaning, use of bed linen and towels
- GPS Tracks
- Wi Fi
- Entry to Zaanse Schans, Keukenhof, North-Holland Dune reserve – **Magnifiques only**

Boats will have two cycling tour guides (for 22 or more riders), guests can opt for longer/shorter or quicker/slower cycling tours (depending on the route).

NOT INCLUDED:

- Transfers to and from the port in Amsterdam
- Drinks on board
- Gratuities
- Excursions not mentioned in itinerary
- Bicycle protection
- Trip insurance
- Bike hire

BICYCLES:

The bicycles on board are mostly unisex touring bicycles with normal mount (ladies model), easy-to-handle Shimano 7 gears, handbrake and pedal brake, gel saddle (height adjustable), a lock on the frame and a pannier bag. All bikes have 28 inch wheels. Some smaller frames are available on board for smaller persons. There are a few e-bikes available (on request and at an additional charge).

The E-Bike is Kreidler Vitality P-200 Shimano with Nexus 7 gears, 3 support levels and hand breaks only (or a comparable brand/model).

Other bikes (e.g. children's bikes, "slip streamers", tandems, etc.) and child saddles (rear) on these tours are only available after prior request (by booking) and confirmation and in very limited numbers. Bike rent is optional. Guests are also allowed to bring their own bicycles or E-bikes (at no extra cost). However, the crew or tour operator is in no way responsible for any damage, loss or theft of such bicycles.

HELMETS

In the Netherlands cyclists are not obligated by law to wear a bike helmet. There are bike helmets available on board for hire.

Book through:

A Walker's World
Don't just see the world. Experience it.
Ph 09 4867473 Fax 09 484 0091
Email: info@walkworld.co.nz

