

Cycling Europe

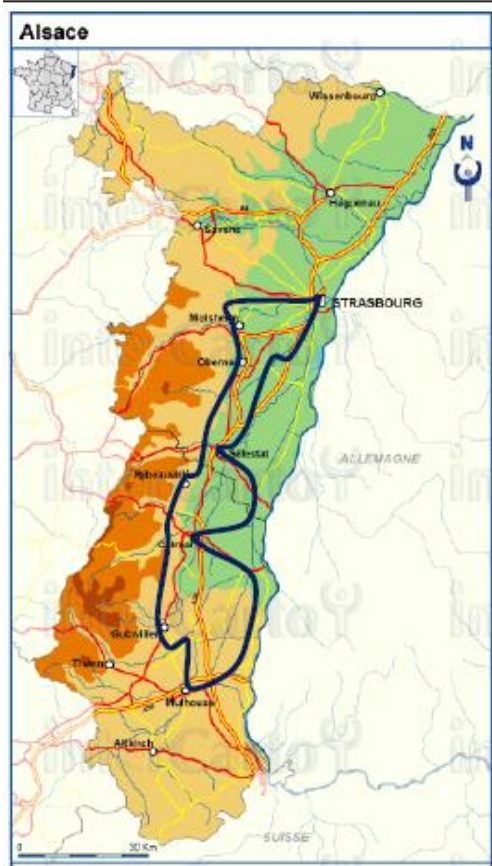
PICTURE BOOK ALSACE VINEYARDS AND VILLAGES

2020 SELF GUIDED 8 DAYS/7NIGHTS CYCLING APPROX 328KMS



Aaaaahh Alsace! A beautiful and less well-known region in northeastern France on the Rhine River plain. For centuries Alsace has alternated between German and French control and the resulting mix of two cultures is a major plus for visitors. Everything in Alsace is exquisite - the food, the wine, the scenery and the way of life.

On this tour you'll wonder what took you so long to discover this picture book region! Picturesque towns full of art and history. Story-book architecture with wooden framing and half-timbered buildings. Ancestral villages nestled between vineyards. The lovely wine routes cycle ways and paths along the Rhine and its canals. And to greet you at the end of each day's cycling, character filled accommodation and a convivial host.



ITINERARY: DAY 1, Arrive STRASBOURG

Tour briefing and bike delivery will take place between 4pm and 6pm at your hotel reception. Your afternoon is free to explore the town, with its monumental cathedral featuring carvings as delicate as any piece of lacework, Strasbourg is one of Europe's most attractive cities. Thanks to the richness and sheer density of its heritage sites, the entire town centre has been listed as UNESCO World Heritage.





DAY 2: STRASBOURG to SELESTAT REGION

Leave Strasbourg along the Rhône-Rhine canal following a scenic cycle track into the heart of the Alsatian Ried .

Cycling: Approx. 25,35 or 55 km depending on accommodation booked

Strasbourg - Osthouse approx 25 km

Strasbourg - Sermersheim approx 35 km

Strasbourg - Selestat approx 55 km

DAY 3: SELESTAT REGION to COLMAR

Cycle through villages and the fascinating landscape of the Alsatian Ried, rich in flora and fauna. At Ebermunster visit the beautiful Baroque church with its unique Silbermann organ before pedalling on to Colmar - city of arts and canals. **Cycling:** Approx. 38, 58 or 68 km

Osthouse - Colmar approx 68 km

Sermersheim - Colmar approx 58 km

Selestat - Colmar approx 38 km



DAY 4: COLMAR –MULHOUSE REGION

From Colmar head east to Neuf Brisach, then continue towards the south to reach the gentle village of Ottmarsheim, where you can visit the Romanesque church, built as a replica to the basilica of Aachen and dating from 12th century. Next enter the Hardt's forest following the Huningue's canal to reach Mulhouse, with its wonderful historic town centre and numerous museums to enjoy. **Cycling:** Approx. 66 kms

DAY 5: MULHOUSE REGION - GUEBWILLER

Leave the banks of the Rhine and the villages of the Sundau to ride to Ungersheim, known for its open-air museum showing old Alsatian-style houses and traditional crafts. Ride on to Guebwiller nestled in the foothills of the Vosges mountains and forest. This is where they grow and harvest the oak for some of the very best French wine barrels.

Cycling: Approx. 35km



DAY 6: GUEBWILLER – RIQUEWILLER AREA

Cycle the winemaking villages at the foot of the Vosges mountains, responsible for the Alsatian Grand Crus wines: Eguisheim, Turkheim, Kaysersberg and Riquewihr.

Cycling: Approx. 48km

DAY 7: RIQUEWIHR – OBERNAI AREA/BARR

Along the way you will discover the scenery and villages of Barr, Andlau and its abbey, Bergheim, Ribeauville, Hunawihr.

Cycling: Approx. 49 km

DAY 8: OBERNAI/BARR – STRASBOURG

Country roads and cycle tracks take you to Rosheim where the Alsatian Romanesque style reaches its climax with the churches of St. Pierre and St. Paul (12th century). From there, follow the cycle track along the Bruche Canal to Strasbourg. Your cycle tour ends this afternoon. Your bags will arrive by 1 pm, so there is time to get an onward train, or you can choose to book a night in Strasbourg (extra cost).

Cycling: Approx. 37km



TERRAIN:

Level 2: Moderate.

You ride on cycle paths and minor agricultural tar-sealed roads, or secondary roads with little traffic. Cycling is partly in vineyards and mostly flat. Days 6 & 7 days are a bit hilly.

Electric bikes are available, if you want an easy tour.

2020 SCHEDULE:

Start any day: from: 04 April - 10 October 2020

ACCOMMODATION: (Choice of 2 Grades)

Category A: **7 nights in 3 Star Hotels**

Category B: **4 nights in 3-star hotels & 3 nights in 2 star hotels**

2020 COST PER PERSON IN EUROS

Low season: 04 - 24 Apr, & 26 Sept - 10 Oct

Mid season: 25 April – 29 May & 05 – 25 Sep

High season: 30 May – 04 Sep

Single room supplement (B & B only)

Half Board Supplement (7 dinners)

Rental bike (choice of 21 gear or 7-gear)

Electric Bike

Helmets (must be requested at time of booking)

DOUBLE ROOM with Breakfast

Cat A:

€ 869

€ 919

€ 959

€289

€ 205

€ 79

€ 189

€ 15

Cat. B

€ 769

€ 819

€ 859

€ 279

€ 175

EXTRA NIGHTS STRASBOURG: (cost per person in Euros - includes breakfast)

3 Star Hotel (Tour Cat A & B) Double room from € 70 / Single room from € 110

TOUR COST INCLUDES:

- 7 nights in comfortable hotels (breakfast included)
- Luggage transfers between tour hotels
- Cycling notes and maps with the marked route
- Tour briefing in Strasbourg Hotel except Sundays and public holidays
- Rental bike insurance
- GPS data on request
- Local contact – service hotline (7 days).

GETTING TO STRASBOURG:

- Train from Paris Gare L'Est is less than 3 hours
- Closest Airports: Strasbourg, Basel/Mulhouse 12 km
- Indoor parking near hotel, approx. €65/week



Book through:

A Walker's World

Don't just see the world. Experience it.

Ph 09 4867473 Fax 09 484 0091

Email: info@walkworld.co.nz

